





Certificate of Analysis

SALSA® MLPA® Probemix P370 BRAF-IDH1-IDH2

Catalogue #	P370-025R, P370-050R, P370-100R	
Product name	Probemix P370 BRAF-IDH1-IDH2	
LOT	C1-0320	
	25, 50, or 100 reactions.	
Shipping conditions	Dry ice or cooling elements.	
	Store upon arrival between -25°C and -15°C.	
	Expiration date: March 2025 year, when stored at recommended conditions. This product should not be frozen/thawed more than 25 times.	
Use	This product has been developed for detection of the <i>BRAF</i> p.V600E & four predominant <i>IDH1</i> (p.R132H and p.R132C) and <i>IDH2</i> (p.R172M and p.R172K) point mutations, for detection of genomic duplications leading to the <i>SRGAP3-RAF1</i> , <i>KIAA1549-BRAF</i> and <i>FGFR1-TACC1</i> fusion genes, and for detection of copy number aberrations in the <i>BRAF</i> , <i>CDKN2A/2B</i> , <i>FGFR1</i> , <i>MYB</i> and <i>MYBL1</i> genes. This probemix is designed for use only in combination with SALSA MLPA reagent kits and Coffalyser.Net as described in the MLPA General Protocol.	
Quality control specifications	<ul style="list-style-type: none"> - Sufficient distance between peaks, absence of extra or shoulder peaks, and completeness of hybridisation of each individual probe, as tested on Applied Biosystems and Beckman/SCIEX GeXP sequencers. - Standard deviation of each individual probe ≤ 0.10, when tested on 23 different DNA samples of healthy individuals, extracted by various methods. - Each individual probe meets reaction-specific criteria when tested on a single DNA sample under various experimental conditions. - No DNA controls result in only five major peaks shorter than 121 nucleotides (nt): four Q-fragments at 64, 70, 76 and 82 nt, and one 19 nt peak corresponding to the unused portion of the fluorescent PCR primer. Non-specific peaks longer than 121 nt AND with a height <25% of the median of the four Q-fragments are not expected to affect MLPA reactions when sufficient (50-250 ng) sample DNA is used. 	<p>Test result</p> <p style="text-align: center; font-weight: bold;">PASS</p>

None of the ingredients are derived from humans, animals, or pathogenic bacteria. Based on the concentrations present, none of the ingredients are hazardous as defined by the Hazard Communication Standard. **A Safety Data Sheet (SDS) is not required for these products:** none of the preparations contain dangerous substances (as per Regulation (EC) No 1272/2008 [EU-GHS/CLP] and amendments) at concentrations requiring distribution of an SDS (as per Regulation (EC) No 1272/2008 [EU-GHS/CLP] and 1907/2006 [REACH] and amendments). If spills occur, clean with water and follow appropriate site procedures.

More information: www.mlpa.com; www.mlpa.eu	
	MRC-Holland bv; Willem Schoutenstraat 1 1057 DL, Amsterdam, The Netherlands
E-mail	info@mlpa.com (information & technical questions); order@mlpa.com (orders)
Phone	+31 888 657 200

Certificate of Analysis
SALSA MLPA Probemix P370-C1 BRAF-IDH1-IDH2 sample pictures

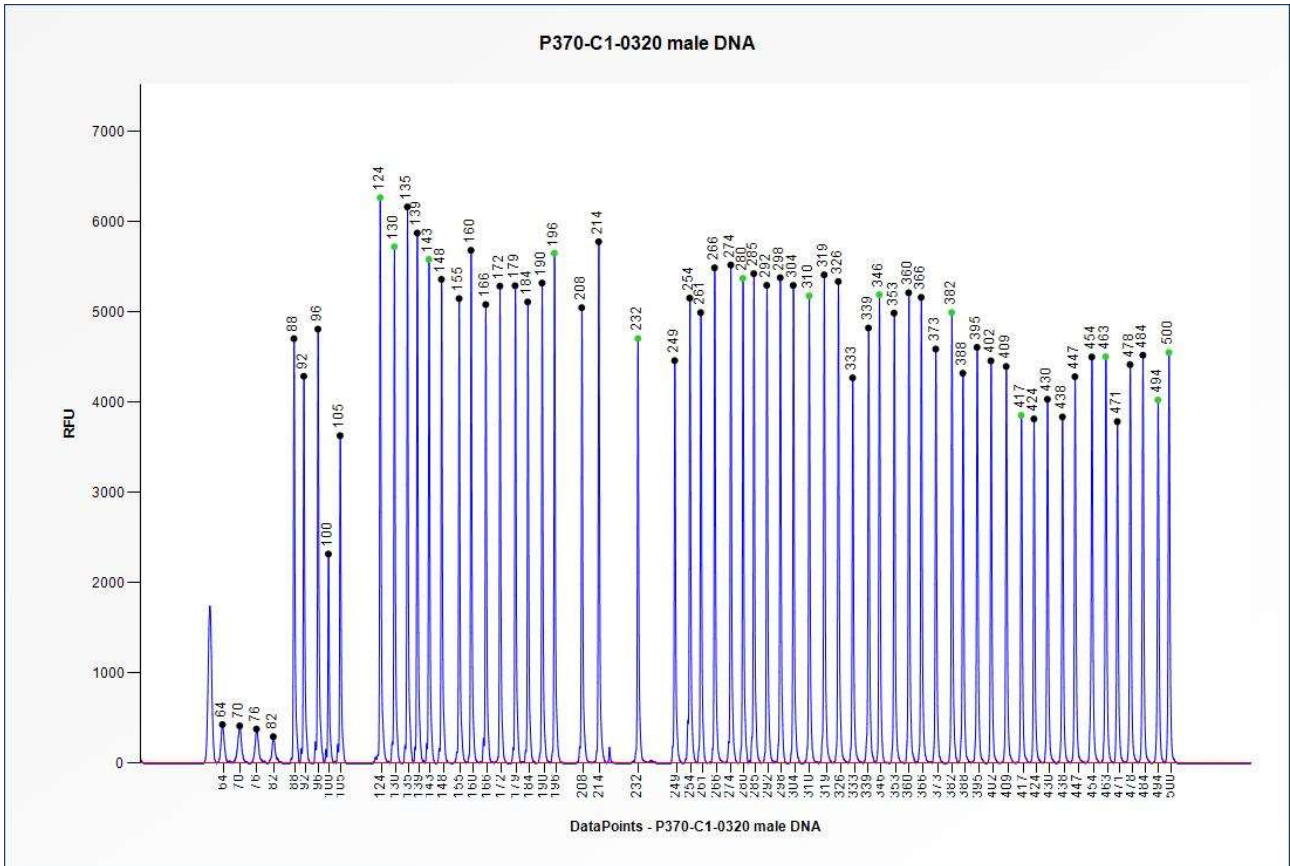


Figure 1. Capillary electrophoresis pattern from a sample of approximately 50 ng human male control DNA analysed with SALSA MLPA Probemix P370 BRAF-IDH1-IDH2 (C1-0320).

Certificate of Analysis

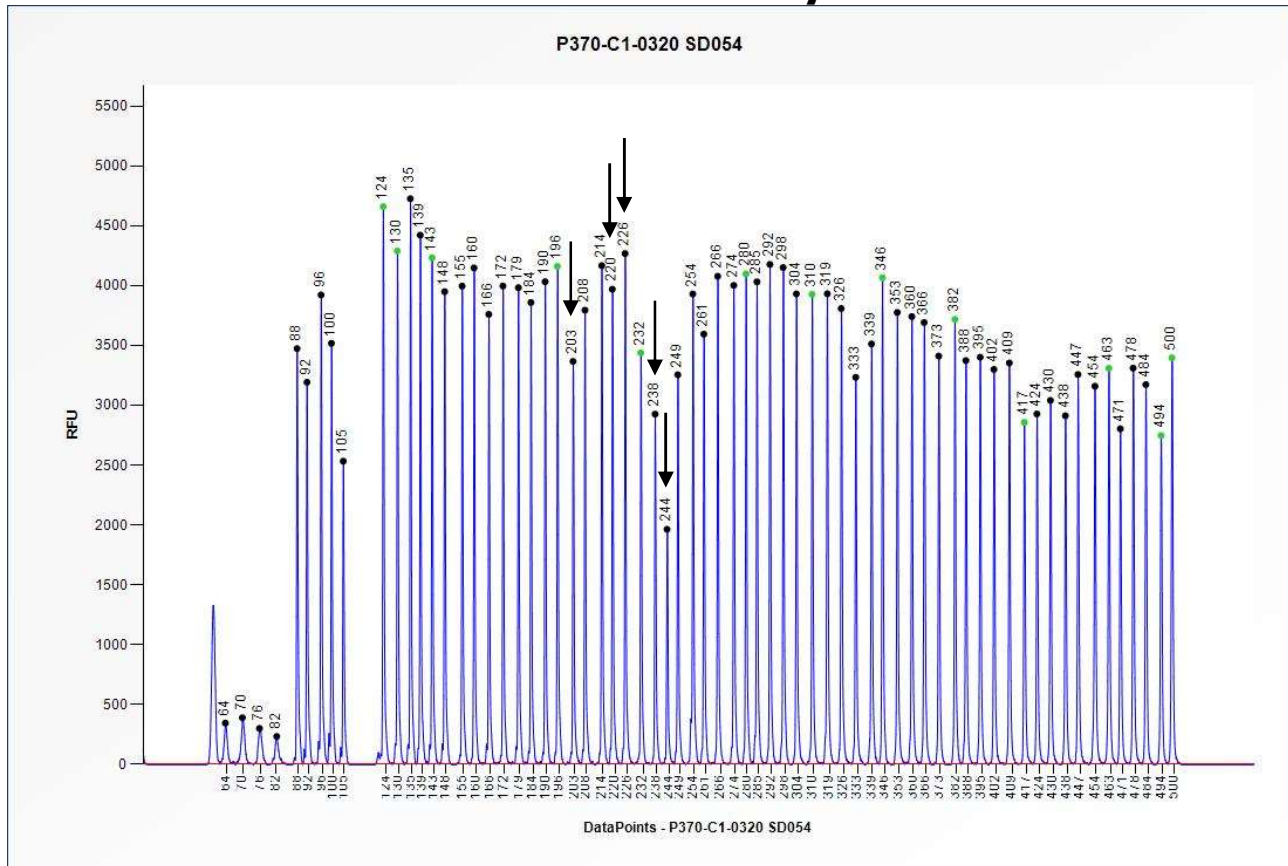


Figure 2. Capillary electrophoresis pattern from SALSA Binning DNA SD054-S01 (approximately 50 ng) analysed with SALSA MLPA Probemix P370 BRAF-IDH1-IDH2 (C1-0320). The locations of the *IDH1* p.R132H probe M19529-L16492 at 203 nt, *IDH1* p.R132C probe M14787-L16493 at 220 nt, *BRAF* p.V600E probe M08780-SP0039-L08904 at 226 nt, and *IDH2* p.R172K probe M20963-L29002 at 238 nt and *IDH2* p.R172M probe M20963-L29001 at 244 nt are indicated.

This lot was certified by MRC-Holland on 23 April 2020.

This certificate is a declaration of analysis at the time of the manufacturing process. All assays were run in compliance with manufacturer's instructions for use.

Implemented changes in the COA

Version 01 – 23 April 2020 (04)

- Not applicable, new document.